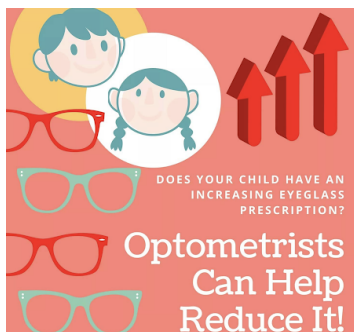


## MYOPIA CONTROL TREATMENT OPTIONS



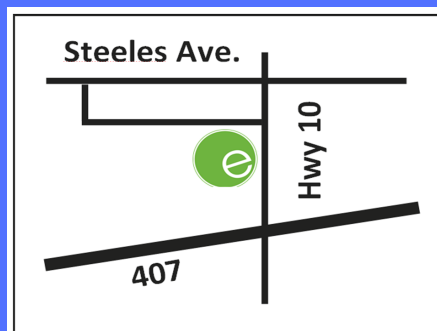
1. Low dose pharmaceutical eye drops (atropine)
2. Orthokeratology (overnight contact lenses)
3. Daily Disposable Therapeutic Contact Lenses
4. Myopia therapy glasses



Doctors can now treat myopia in young children early to prevent myopic eye diseases in the future and stabilize the growth of the eye



## Contact Us



406-7900 Hurontario  
Street  
Brampton, ON  
T: 905-456-9333  
F: 905-456-9332  
[www.eyelabs.ca](http://www.eyelabs.ca)



### SERVICES

The Dry Eye Clinic  
The Contact Lens Clinic  
The Myopia Control Clinic  
Family and Emergency Eye Clinic



## Myopia Control Clinic



## Patient Education

What is Myopia Control? Is my child at risk for myopic eye disease? What can be done about it?

## Does your child have progressive myopia?



### WHAT IS MYOPIA?

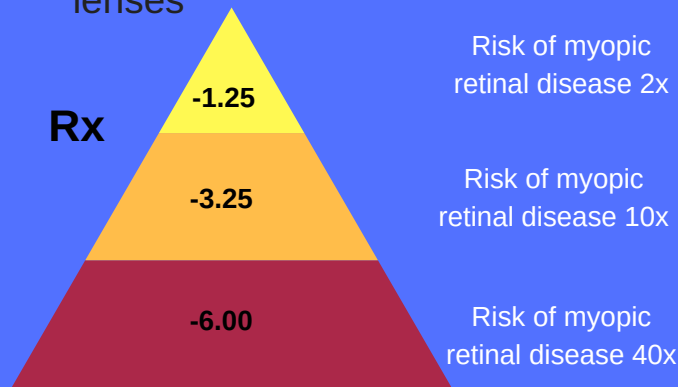
Myopia also known as “near-sightedness” is when an individual's vision is focused clearly at near, but blurry at a distance. This is why it's termed “near-sighted” because their vision is able to see at near only

### WHY SHOULD YOU BE CONCERNED?

Myopia is increasing at epidemic rates. In a University of Waterloo study almost 1 out of 3 Canadian children between 11 and 13 years of age are myopic. By 2050, 50% of the global population will be nearsighted

### WHAT CAN HAPPEN TO AN EYE WITH PROGRESSIVE MYOPIA?

- Increased risk of early cataract
- Increased risk of myopic macular degeneration
- Increased risk of retinal disease
- Decreased quality of visual optics with higher powered spectacle lenses



### A PROGRESSIVE MYOPIC EYE MEANS A LONGER EYEBALL LENGTH (AXIAL LENGTH)



Normal eye  
Low prescription  
Average eyeball (axial length)



Myopic (near-sighted) eye  
High prescription  
Longer eyeball (axial length)

### WHAT IS INVOLVED IN A MYOPIA CLINIC CONSULTATION?

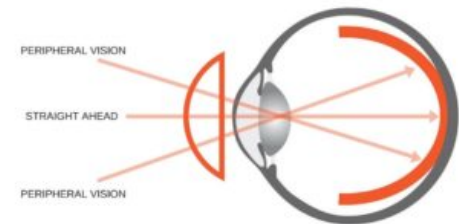


- Topography imaging
- Cycloplegic refraction
- Axial length measurement
- Binocular vision assessment

- Evidence shows that eyeball length (axial length) and curvature are more predictive of risk of myopia than your child's glasses Rx
- Axial length is measured using a painless ultrasound



### HOW DO YOU SLOW DOWN PROGRESSIVE MYOPIA?



- Years of research has shown that optometrists can reduce myopia by using pharmaceutical eye drops, contact lenses or glasses.
- The mode of action is to focus the light rays in the peripheral (side vision) in front of the retina so it does not signal the eye to grow longer